

LIFETIME *Limited* WARRANTY

Jandon warrants this product to be leak and drip-free during normal household use for as long as it is owned by the original consumer purchaser.

Should a malfunction occur within the time covered by this warranty, replacement parts may be obtained from the place of purchase or from Jandon's Customer Service Department at toll free 877-526-3668. Jandon will, at Jandon's discretion, provide replacement parts for installation by consumer for any parts that prove defective under normal usage and service with new, like or equivalent Jandon parts.

This warranty shall not apply to goods which have been subject to accidents, negligence, improper installation, or misuse.

Our responsibility under this warranty is limited only to replacement of parts and no other costs.

This warranty covers the original consumer purchaser only and does not include business, commercial or industrial use of this product.



 **JANDON**®
Useful Everyday

Single Handle & Two Handle Lavatory Faucet

 **JANDON**® FAUCETS
Useful Everyday

© All rights reserved. 2009

Thank you for purchasing this **JANDON** product. By following the care instructions in this booklet you will enjoy this quality item for many years to come.

Jandon faucets are crafted with the skill and quality to last for lifetime. You can appreciate the fine craftsmanship in your own home with Jandon fixtures in contemporary designs, meticulously engineered with water and energy-saving features.

Care Instructions

To clean, wipe gently with a soft, damp cloth, then wipe dry. **JANDON** finishes are very durable. However to ensure long lasting luster, harsh abrasives or polishes should be avoided.



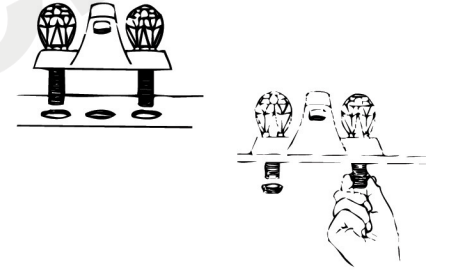
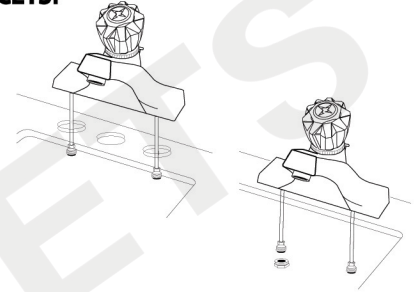
Please Conserve Water!



INSTALLATION INSTRUCTIONS

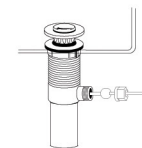
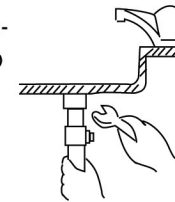
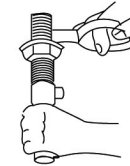
TO INSTALL SINGLE & DOUBLE HANDLE FAUCETS:

- 1 Turn off water supply at valves or main.
- 2 Position faucet on the sink. From underneath sink, secure faucet with mounting nuts. Hand-tighten nuts, check faucet position, then wrench tighten.
- 3 Apply teflon tape or pipe thread compound to male faucet threads. Attach water supply lines to faucet and valves.
- 4 Install Pop-Up assembly.
- 5 Make sure all connections are tight and turn on water supply.
- 6 Unscrew and remove aerator. Turn water on and check for leaks. Run hot and cold water uninterrupted for about 1 minute to remove any residue from the lines. Replace aerator.

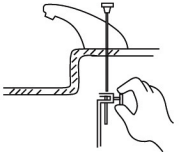


TO INSTALL POP-UP ASSEMBLY:

- A** Thread mounting nut and bottom gasket onto drain body. Wrap top threaded end of the drain body with teflon tape.
- B** Insert drain body up through the drain opening and screw seat onto drain body. Hold the drain body with pivot rod opening facing the back of the sink. Hand tighten the mounting nut. Insert pop-up stopper.
- C** Place pivot rod in proper opening. Slide pivot nut over rod and thread nut onto drain body. Tighten firmly, but DO NOT OVER-TIGHTEN.



- D** With lift rod in position in the faucet, insert lift rod through lift rod strap and secure with set screw.



- E** Guide the pivot rod through any hole on the lift rod strap and secure it with the spring clip. Adjust the height of the lift rod by resetting the set screw.

