

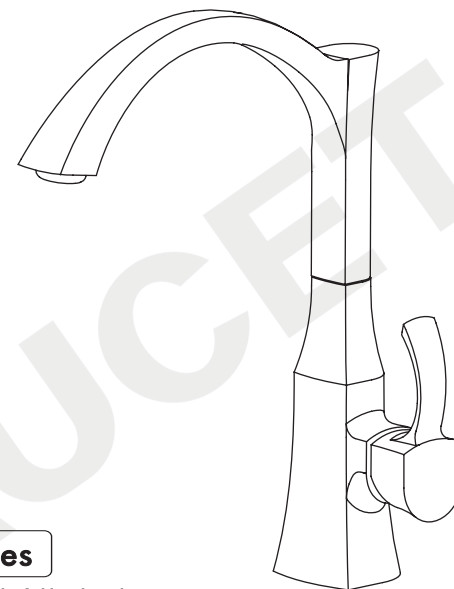
## Warranty Information

JANDON faucet warrants the original purchase (must have prove of purchase) that such product is free from defect in materials or workmanship for as long as the original consumer purchaser owns their home from the date of purchase. This warranty is limited to but not including labor charges incurred and/or damages sustained during installation, repair or replacement, nor incidental or consequential damages. This warranty does not cover items which have received secondary finishing or have been altered or modified after purchase, or for defects caused by physical abuse to or misuse of the product. This warranty gives the original purchaser of a JANDON faucet specific legal rights which may vary from state to state or from province to province. In some states or provinces the exclusion or limitation of incidental or consequential damages is not allowed, so those exclusions may not apply to you.

Thank you for your purchase!

 **JANDON® FAUCETS**  
Useful Everyday

Toll Free : 1 - 877 - 526 - 3668  
Website : [www.jandonfaucet.com](http://www.jandonfaucet.com)  
E - m a i l : [info@jandonfaucet.com](mailto:info@jandonfaucet.com)



**Model : 5124 Series**

® Chrome, Brushed Nickel,  
Oil Rubbed Bronze

 **JANDON® FAUCETS**  
Useful Everyday

**Single Handle HI ARC Kitchen Faucet**

Thank you for purchasing this JANDON FAUCETS product. By following the care instructions in this booklet you will enjoy this quality item for many years to come.

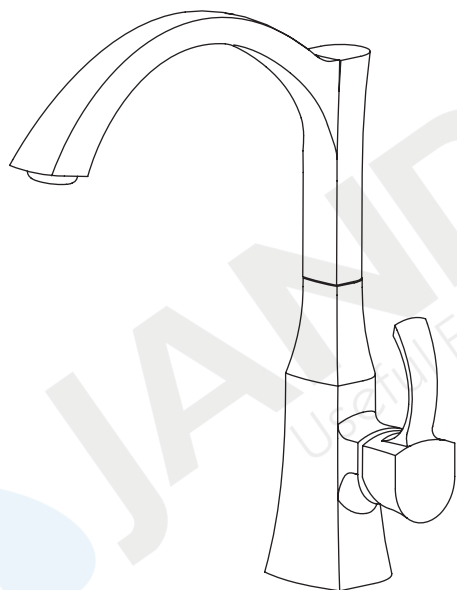
JANDON FAUCETS Faucets are crafted with the skill and quality to last for lifetime. You can appreciate the fine craftsmanship in your own home with Brookfield fixtures in contemporary designs, meticulously engineered with water and energy-saving features.

## Care Instructions

To clean, wipe gently with a soft, damp cloth, then wipe dry. JANDON FAUCETS finished are very durable. However to ensure long lasting luster, harsh abrasives or polished should be avoided.



*Please Conserve Water!*

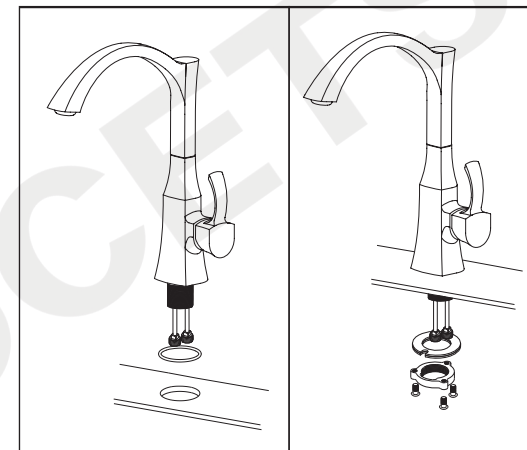


## INSTALLATION INSTRUCTIONS

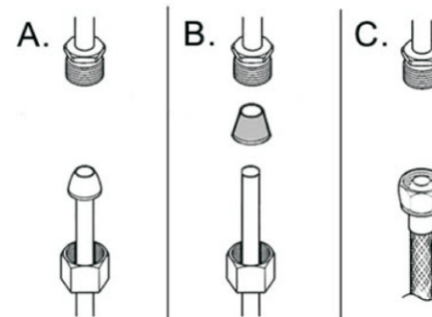
### TO INSTALL SINGLE HANDLE HI ARC KITCHEN FAUCET

#### Faucet installation

- 1 Pass the shank and the supply tubes down through the O-ring, and insert into the sink hole.
- 2 Assemble the anchor kit, nut, and screw in order; fix the faucet's position and direction. Next assemble the nut and tighten with the appropriate tool.

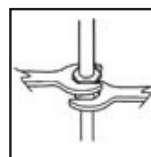


#### Water supply connection



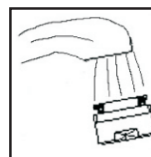
Connect to water supply lines with either:

- (A) 3/8" O.D. Copper tubing (ball nose risers with the coupling nuts or;
- (B) 3/8" Copper tubing (no ball) with supplied tube head interior connector or;
- (C) IPS faucet connectors (1/2" )



#### Important:

Important  
Tighten connection with two wrench to prevent damage to tube body. Be careful not to bend the stem as this will void the product warranty.



#### Important:

Remove the aerator and let both hot and cold water run for one minute. To clear any line trash. This will help clean any debris that might clog the system. Re-assemble aerator.

**Test system for leaks .**