



Warranty Information

JANDON faucet warrants the original purchase (must have prove of purchase) that such product is free from defect in materials or workmanship for as long as the original consumer purchaser owns their home from the date of purchase. This warranty is limited to but not including labor charges incurred and/or damages sustained during installation, repair or replacement, nor incidental or consequential damages. This warranty does not cover items which have received secondary finishing or have been altered or modified after purchase, or for defects caused by physical abuse to or misuse of the product. This warranty gives the original purchaser of a JANDON faucet specific legal rights which may vary from state to state or from province to province. In some states or provinces the exclusion or limitation of incidental or consequential damages is not allowed, so those exclusions may not apply to you.

Thank you for your purchase !



Toll Free : 1 - 877 - 526 - 3668
Website : www.jandonfaucet.com
E - mail : info@jandonfaucet.com



Model : 6986 Series

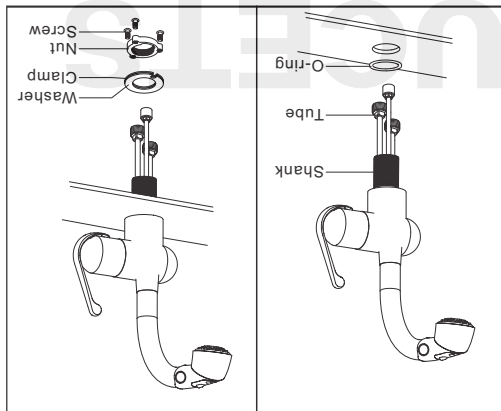
Chrome, Brushed Nickel PVD, Oil Rubbed Bronze



Single Handle Kitchen Pull-out Faucet
3 Hole or Single Hole Installation

Faucet installation

- 1 Pass the shank and the tubes down through the O-ring, and insert into the sink hole.
- 2 Assemble washer & clamp, nut, and screw in order, fix the faucet's position and direction. Next assemble the nut and tighten with the appropriate tool.



Install Without Deck Plate

1

Screwdriver Pliers Channel Locks Adjustable Wrench



Plumber's Putty Flashlight Safety Glasses



Gather the necessary tools as shown below to complete the installation of this faucet. Some may not be needed depending on the model of faucet you are installing. Check with your local hardware store on the requirements of your installation situation.

Tools:

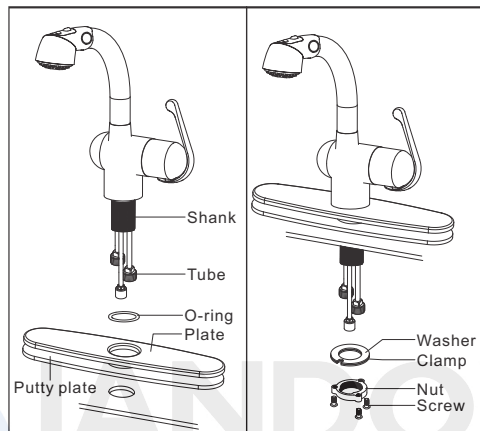
Helpful Tools

Helpful Information



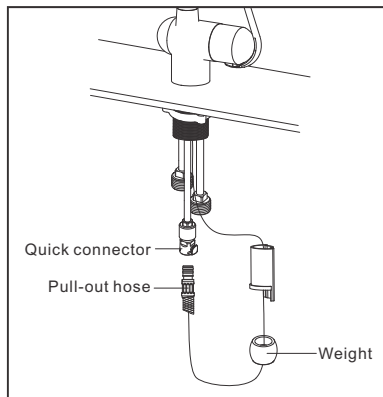
2

Install With Deck Plate



Pull-out hose installation

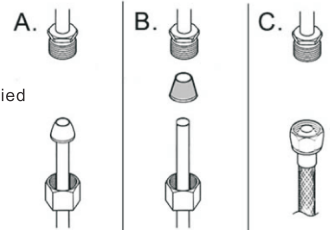
Slip the hose weight onto the pull-out hose. Connect the end of the pull-out hose to the quick connector.



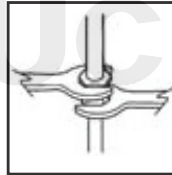
3

Water supply connection

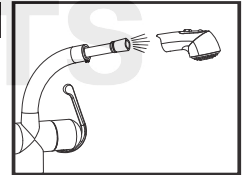
Connect to water supply lines with either:
 (A) 3/8" O.D. Copper tubing (ball nose risers with the coupling nuts or;)
 (B) 3/8" Copper tubing (no ball) with supplied tube head interior connector or;
 (C) IPS faucet connectors (1/2")



1



2



Important:

Tighten connection with two wrench to prevent damage to tube body. Be careful not to bend the stem as this will void the product warranty.

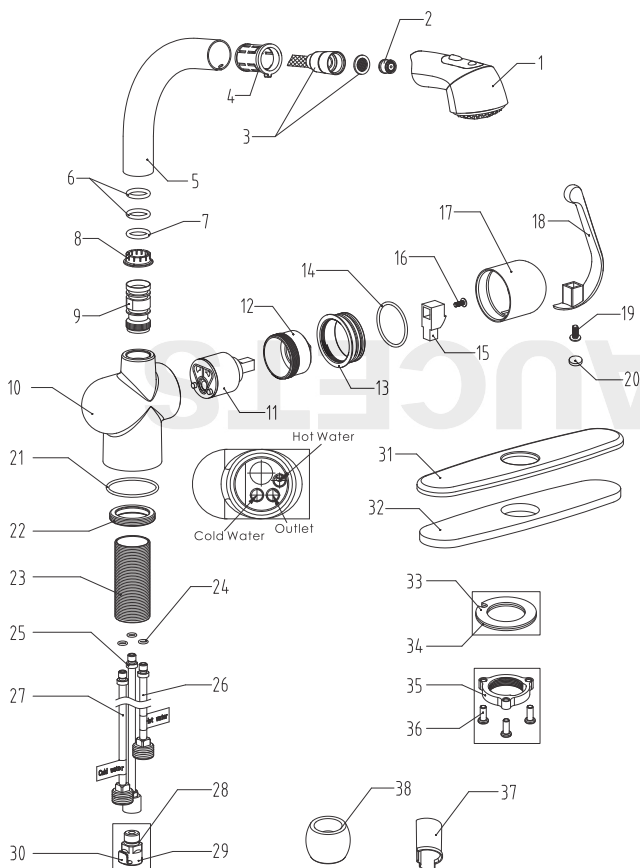
Important:

Remove the pull-down wand and let both hot and cold water run for one minute. To clear any line trash. This will help clean any debris that might clog the system. Re-assemble pull-down wand.

Test system for leaks .

4

Parts Diagram



5

Parts List

38	5QQ07000	Weight
37	8HT56U26	Sleeve
36	8RM6X15	Screw
35	8NM56080	Nut
34	80N56080	Clamp
33	81N56080	Washer
32	5PDT803M	Putty Plate
31	5MBT8035	8" Plate
30	8SJ56226	Quick-connect snap ring
29	8JT56226	Quick connector
28	8J16X22	O-Ring
27	8JG07223	Tube
26	8JG07183	Tube
25	8JG07265	Tube
24	8J96X18A	O-Ring
23	81T56089	Threaded shank
22	8JT45A35	Connector
21	8J52X25	O-Ring
20	81N40LM2	Cap
19	8DM5X16	Screw
18	80P40LM2	Handle
17	83T56014	Plastic Cap With Adjusting Ring
16	8FM4X10	Screw
15	81P40LM2	Handle Connector
14	8J46X26	O-Ring
13	82T56014	Cover
12	8YG56014	Bonnet
11	J10400	Ceramic Cartridge
10	80T56089DQ	Body
9	8JT56089	Spout Connector
8	8SJ56014	Circle
7	8J24X35	O-Ring
6	8J24X3	O-Ring
5	80G56014	Spout
4	82F15020	Socket
3	H56020	Pull-out hose
2	J92031SL1	Non-returnable valve
1	F25010	Spray Head
No.	Part Number	Part Name